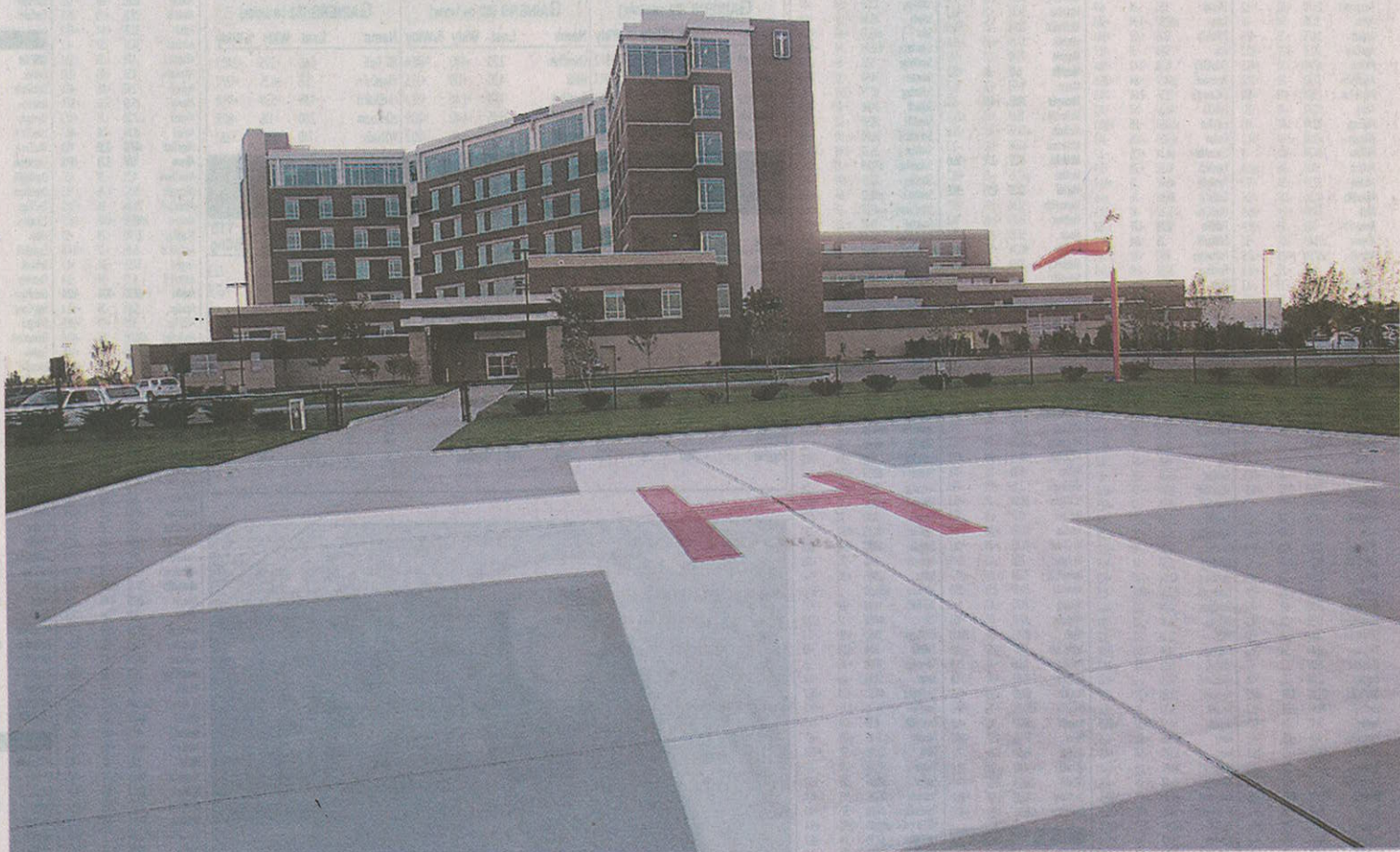


MTMC to break ground on office building in Nov.



JIM DAVIS/DNJ FILE

The new Middle Tennessee Medical Center rises against the horizon behind a helipad for emergency helicopters. The hospital, which opened Oct. 2, will continue to expand with groundbreaking ceremonies set next month for its second medical office building.

Cancer center to expand; receives \$300K grant

THE DAILY NEWS JOURNAL

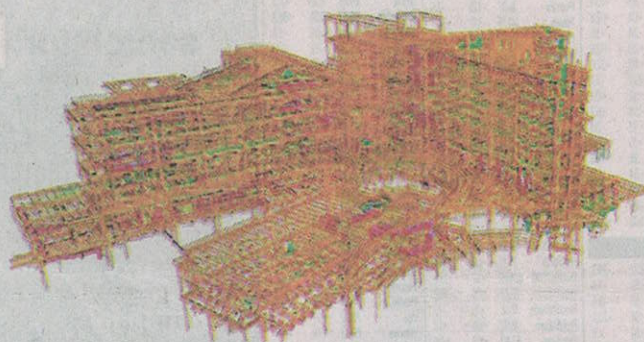
Middle Tennessee Medical Center will break ground in November on its second medical office building adjoining the new hospital on Medical Center Parkway, bringing an expanded cancer center from its current Bell Street location along with it.

Johnson Development of Birmingham will develop the new four-story building located adjacent to the DePaul medical office building, which will have a connecting walkway to MTMC's new hospital and will contain several physician offices as well as the MTMC Regional Cancer Center.

The building will be called the Seton Medical Office Building, named after St. Elizabeth Ann Seton, a widow with 5 children, who founded the Sisters of Charity in Emmitsburg, Md., in 1809, later uniting with the Daughters of Charity in Paris, France in 1850. She was the first American-born saint.

The building is expected to be complete in late 2011.

SEE MTMC, PAGE B7



Award-winning building information modeling software was used to expedite the design and construction of the new MTMC, as seen at left.

SUBMITTED PHOTO

New MTMC receives construction award

THE DAILY NEWS JOURNAL

The new Middle Tennessee Medical Center has been recognized in South Central Construction magazine's Region's Best of 2010 Winners for best health care.

Turner Universal Construction of

Brentwood was the contractor for the \$267 million facility. Through use of new methods like building information modeling (BIM), integrated project delivery and lean construction, Turner was able to complete the 556,000-square-foot replacement facility on SEE AWARD, PAGE B7

MTMC

FROM PAGE B5

MTMC recently received approval from the Health Services Development Agency to relocate the cancer center from its current location on Bell Street to the new medical office building once complete. Along with a new location, the cancer center will provide two new linear accelerators, which are being partially funded through a \$300,000 grant from the Christy-Houston Foundation.

"The original plan was to move one of our existing linear accelerators and purchase an additional one," said Gordon B. Fer-

guson, MTMC president and CEO. "The Christy-Houston Foundation Board, however, has agreed to provide funding toward two new accelerators, which will allow us to go with the more aggressive equipment plan within the approved budget."

A linear accelerator is most commonly used for external beam radiation treatments for patients with cancer. It produces a uniform dose of high-energy X-rays targeted directly at a cancer tumor.

"The new technology will have a feature known as IGRT which allows us to localize the tumor more accurately, so we know exactly where to

aim during treatment," said Dr. Charles Wendt, a radiation oncologist at MTMC's Regional Cancer Center. "The new features allow us to concentrate specifically on the tumor and not harm the surrounding tissue."

Tennessee Oncology will be relocating its current office from the Bell Street Center to become the anchor tenant of the 113,000-square-foot building.

"The purchase of new linear accelerators and the move to the new building will allow the cancer center to continue providing the highest quality care in a new and expanded facility that will

allow patients the full range of cancer therapy options," said Dr. John Barton of Tennessee Oncology. "We anticipate the facility will allow us to bring the best of community-based care with academic research in an aesthetically pleasing environment to the patients of Middle Tennessee."

Other offices planned to move into the Seton building are Saint Thomas Heart at MTMC, including the cardiac rehab program and Wellness Center, Center for Breast Health, Wound Care Center and Bariatric Center of Excellence.

AWARD

FROM PAGE B5

budget and three months ahead of schedule.

"The new hospital was one of the first projects in the Southeast to utilize building information modeling during the construction process," said Andy Davis, project manager at Turner Universal. "BIM utilizes 3D digital building models to increase productivity in building de-

sign and construction."

South Central Construction's annual competition recognizes construction and design excellence from Alabama, Arkansas, Kentucky, Mississippi and Tennessee. Projects eligible for the competition were evaluated by an independent jury of industry experts.

The awards will be featured in the December issue of South Central Construction magazine.

FYI

Middle Tennessee Medical Center is part of Saint Thomas Health Services, a faith-based ministry with more than 6,500 associates serving Middle Tennessee. STHS is a member of Ascension Health, a Catholic organization that is the largest not-for-profit health system in the United States. For more information, visit www.sths.com.

For more information on MTMC's new medical campus or cancer services, visit www.mtmc.org.

